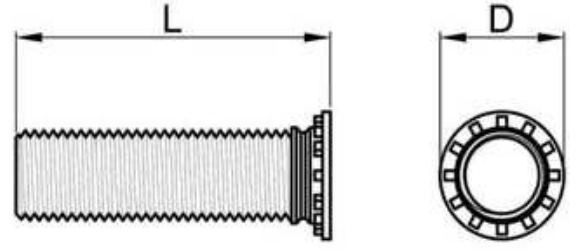


CH-CHS-CHA



Series	Material	Finish
CH	Isıl işlemlili karbon çeliği Heat-treated carbon steel	Çinko Zinc Clear
CHS	300 Serisi Paslanmaz Çelik Passivated ASTM A380	ASTM A380 Pozisyonlu
CHA	2024-T4 Alüminyum 2024-T4 Aluminium	None

CH saplamalar 1 mm inceliğindeki metallere uygulanırlar yüksek torklara dayanırlar ve yerlerinden çıkmaları zordur.

CH studs provide a strong flush-head assembly in material as thin as .040 in (1.0 mm) with high torque-out and pushout performance.

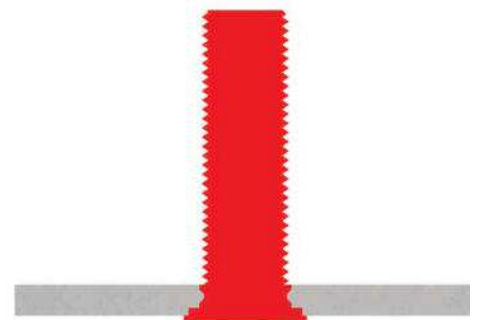
Dişler : 2A Sınıfı, MIL-S-7742;
(6g ISO metric)
Uygulanan Metaller : CH-HRB-80 veya daha az
: CH-HRB-70 veya daha az
: CH-HRB-50 veya daha az

Thread : Class 2A, MIL-S-7742;
(6g ISO metric)
Use In : CHS Materials with HRB-80 or less.
: CHS Materials with HRB-70 or less.
: CHA Materials with HRB-50 or less.

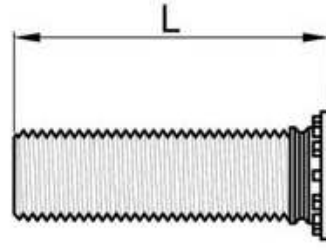
Boyutlar ve Özellikleri

Diş Ölçüsü	Diş Kodu	L Uzunluk / Length $\pm .4$ mm													D $\pm .4$	Mak. Önerilen Somun- Sıkma Torku	Min.	Min.			
		6	8	10	12	15	18	20	22	25	28	30	35	38							
Thread Size	Thread Code																	+08 -00	Max Rac. Nut Tight Torque N m		
M2,5X0,45	M2,5	-6 ⁺	-8 ⁺	-10 ⁺	-12 ⁺	-15 ⁺	-18 ⁺										4,1	2,5	,40	5,4	1,0
M3X0,5	M3	-6	-8	-10	-12	-15	-18	-20	-22	-25							4,6	3,0	,72	5,6	1,0
M3,5X0,6	M3,5	-6	-8	-10	-12	-15	-18	-20	-22	-25	-28	-30					5,3	3,5	1,1	6,4	1,0
M4X0,7	M4	-6	-8	-10	-12	-15	-18	-20	-22	-25	-28	-30	-35	-38			5,9	4,0	1,6	7,2	1,0
M5X0,8	M5		-8	-10	-12	-15	-18	-20	-22	-25	-28	-30	-35	-38			6,5	5,0	3,4	7,2	1,0
M6-1,0	M6			-10	-12	-15	-18	-20	-22	-25	-28	-30	-35	-38			8,2	6,0	5,7	7,9	1,6
M8X1,25	M8				-12	-15	-18	-20	-22	-25	-28	-30	-35	-38			9,6	8,0	14,0	9,6	2,4

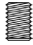

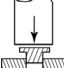


Diş Kodu	Matris Ölçüsü / Anvil Dimensions (mm)	
	X +1	Y +08
M2,5	3,1	2,50
M3	3,6	3,00
M3,5	4,1	3,50
M4	4,6	4,00
M5	5,6	5,00
M6	6,6	6,00
M8	-	8,00



CH-CHS-CHA

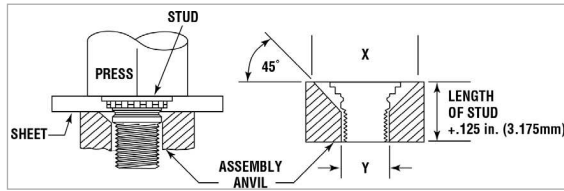


Montaj ve Performans Verileri

Diş Kodu  Thread Code	Metal Kalınlığı  Sheet Thickness & Material	Uygulama Gücü (kN)  Installation Force (kN)	Sökme Gücü (N)  Pushout (N)	Sökme Torku (N.m)  Torqueout (N.m)
M2,5	1,6 Aluminium	8,9	465	1,0
	1,5 Steel	11,1	740	1,0
M3	1,6 Aluminium	12,9	600	1,7
	1,5 Steel	14,7	820	1,7
M3,5	1,6 Aluminium	15,6	800	1,7
	1,5 Steel	22,3	1335	2,8
M4	1,6 Aluminium	20,0	975	2,9
	1,5 Steel	28,9	1780	4,2
M5	1,6 Aluminium	24,5	1070	3,5
	1,5 Steel	33,4	2000	6,5
M6	2,4 Aluminium	28,9	1660	7,3
	2,2 Steel	44,5	2560	11,3
M8	2,4 Aluminium	28,9	1910	11,3
	2,2 Steel	44,5	2890	19,2

Note 1A

Alet için gereken malzeme kalınlığı, 050 inc (1,51 mm) ve daha az #2 (M2,5), #10 (M5) diş ölçüsü ve daha az, 0,93 in (2.3 mm) 1/4 in için (M6) diş

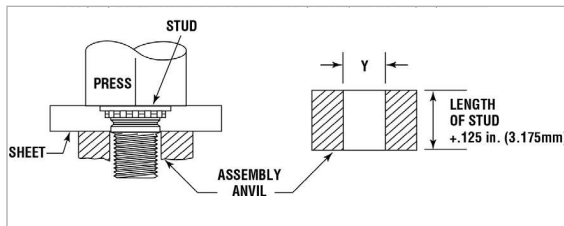


Note 1A

Tooling for sheet thickness, 059 in (1,51 mm) and less #2 (M2,5), #10 (M5) thread sizes and less than, 0,93 in (2.3 mm) for 1/4 in (M6) threads

Note 2

Alet için gereken malzeme kalınlığı, 060 inc (1,51 mm) min. ve fazlası #2 (M2,5), #10 (M5) diş ölçüsü ve 0,92 in (2.3 mm) min. ve fazlası 1/4 in (M6) ve 5/16 in. (M8) diş



Note 2

Tooling for sheet thickness .060 in. (1.51 mm) minimum and greater with #2 (M2.5) thru #10 (M5) thread sizes and .92 in. (2.3 mm) minimum and greater for 1/4 in. (M6) and 5/16 in. (M8) threads.