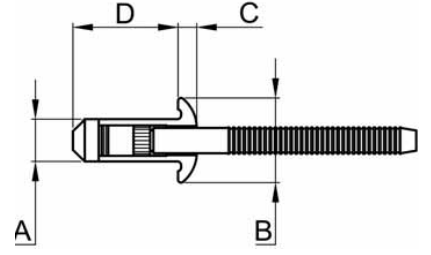
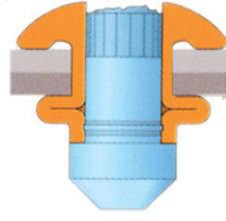
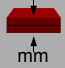



AUTO-BULB ÇELİK BOMBE KAFA

AUTO-BULB STEEL DOME HEAD



ÜRÜN NO PART NO	 mm	 [mm]	A	B	C	D
ABP-R6-M2	1,90 - 2,79					11,96
ABP-R6-M3	2,21 - 3,81					12,95
ABP-R6-M4	3,20 - 4,80					13,97
ABP-R6-M5	4,19 - 5,79					14,96
ABP-R6-M6	5,21 - 6,81					15,98
ABP-R6-M7	6,20 - 7,80					16,97
ABP-R6-M8	7,19 - 8,81					17,88
ABP-R6-M9	8,20 - 9,80					18,97
ABP-R6-M10	9,19 - 10,80	4,85 - 5,11	4,83	9,53	2,57	19,99
ABP-R6-M11	10,21 - 11,81					20,98
ABP-R6-M12	11,20 - 12,75					22,00
ABP-R6-M13	12,22 - 13,82					22,99
ABP-R6-M14	13,21 - 14,81					24,00
ABP-R6-M15	14,22 - 15,82					24,99
ABP-R6-M16	15,21 - 16,81					26,01
ABP-R6-M17	16,23 - 17,83					27,00
ABP-R6-M18	17,22 - 18,82					28,02
ABP-R8-M2	1,52 - 3,51					15,80
ABP-R8-M3	2,79 - 4,80					17,09
ABP-R8-M4	3,81 - 5,82					18,11
ABP-R8-M5	4,80 - 6,81	6,63 - 6,91	6,60	13,00	2,84	19,10
ABP-R8-M6	5,82 - 7,82					20,12
ABP-R8-M7	6,81 - 8,79					21,11
ABP-R8-M8	7,82 - 9,83					22,12
ABP-R8-M9	8,79 - 10,80					23,11

Kesme Kopma Değerleri (N)

Shear Tensile Values (N)

	ÇAP Ø	KESME	
	4,8	5340	3780
	6,4	11570	7120