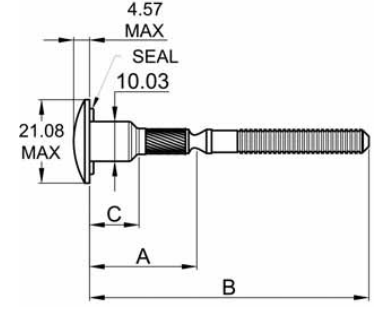
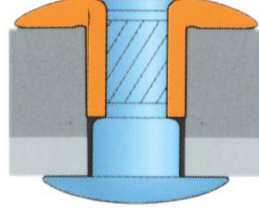
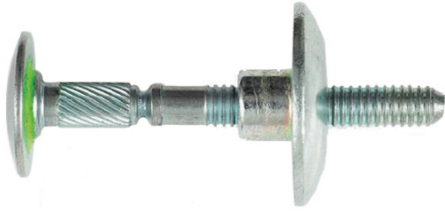
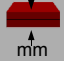



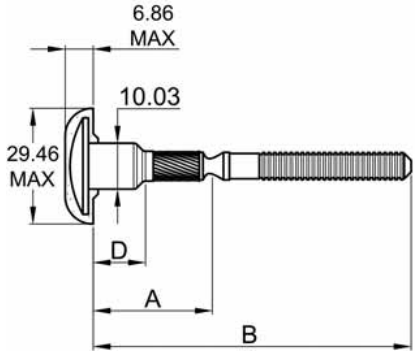
HUCKTAINER LOCKBOLT ÇELİK BOMBE Kafa

HUCKTAINER LOCKBOLT STEEL DOME HEAD



| ÜRÜN NO PART NO |  mm |  [mm] | Ø | A | B | C | D |
|--------------------|--|--|-------|-------|-------|-------|-------|
| HLPPLS-R12-10 | 14,27 - 17,48 | 10,29 - 10,69 | 10,03 | 15,85 | 56,69 | 2,54 | 0,97 |
| HLPPLS-R12-11 | 15,88 - 19,05 | | | 17,45 | 58,29 | 4,01 | 2,44 |
| HLPPLS-R12-12 | 17,45 - 20,62 | | | 19,02 | 59,87 | 5,59 | 4,01 |
| HLPPLS-R12-13 | 19,05 - 22,23 | | | 20,62 | 61,47 | 7,16 | 5,59 |
| HLPPLS-R12-14 | 20,62 - 23,80 | | | 22,2 | 63,04 | 8,76 | 7,19 |
| HLPPLS-R12-15 | 22,23 - 25,40 | | | 23,8 | 64,64 | 10,36 | 8,79 |
| HLPPLS-R12-16 | 23,80 - 26,97 | | | 25,37 | 66,22 | 11,94 | 10,36 |
| HLPPLS-R12-17 | 25,40 - 28,58 | | | 26,97 | 67,82 | 13,51 | 11,94 |
| HLPPLS-R12-18 | 29,97 - 30,15 | | | 28,55 | 69,39 | 15,11 | 13,54 |
| HLPPLS-R12-19 | 28,58 - 31,75 | | | 30,15 | 70,99 | 16,71 | 15,14 |
| HLPPLS-R12-20 | 30,15 - 33,32 | | | 31,72 | 72,57 | 18,29 | 16,71 |
| HLPPLS-R12-21 | 31,75 - 34,93 | | | 33,32 | 74,17 | 19,86 | 18,29 |
| HLPPLS-R12-22 | 33,32 - 36,50 | | | 34,9 | 75,74 | 19,86 | 18,29 |

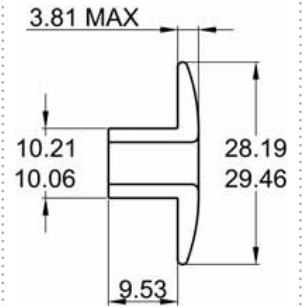
PLASTİK ŞAPKALI Kafa
PLASTIC ENCAPSULATED HEAD



Kesme Kopma Değerleri (N)
Shear Tensile Values (N)

| KOPMA |
|----------|
| 6670 TYP |

HLPS-R12



HLPSC-R12

