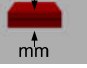

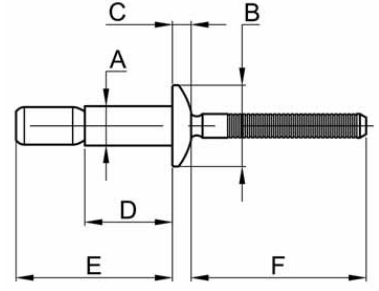
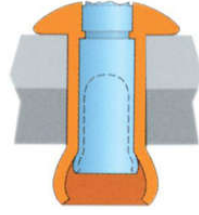
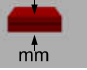



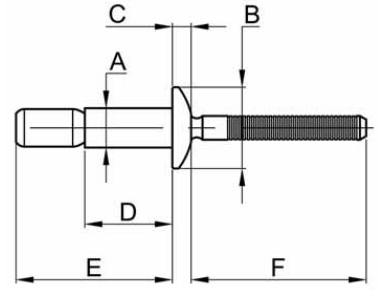
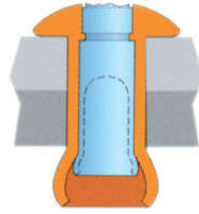
Çelik Bombe Kafa - Steel Dome Head

ÜRÜN NO PART NO	 mm	 [mm]	A	B	C	D	E	F
MGLP-R6-4	1,57 - 6,86	4,85 - 5,11	4,80	9,78	2,16	10,54	17,15	25,40
MGLP-R6-7	5,44 - 11,10					14,53	20,96	25,40
MGLP-R6-E	1,57 - 11,10	6,63 - 6,91	6,40	13,34	2,97	14,53	24,13	25,40
MGLP-R8-6	2,03 - 9,53					14,22	24,64	25,40
MGLP-R8-10	8,89 - 15,88	9,96 - 10,36	9,50	19,99	4,45	20,57	30,99	25,40
MGLP-R8-E	2,03 - 15,88					20,57	35,69	25,40
MGLP-R12-12	3,05 - 14,22					21,34	41,91	39,24

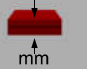



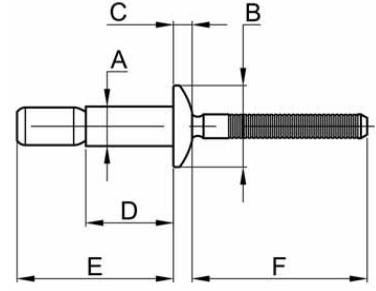
Alüminyum Bombe Kafa - Aluminium Dome Head

ÜRÜN NO PART NO	 mm	 [mm]	A	B	C	D	E	F
MGLP-R6-4	1,57 - 6,86	4,85 - 5,11	4,80	9,78	2,16	10,54	17,15	25,40
MGLP-R6-7	5,44 - 11,10					14,53	20,96	25,40
MGLP-R6-E	1,57 - 11,10	6,63 - 6,91	6,40	13,34	2,97	14,53	24,13	25,40
MGLP-R8-6	2,03 - 9,53					14,22	24,64	25,40
MGLP-R8-10	8,89 - 15,88	9,96 - 10,36	9,50	19,99	4,45	20,57	30,99	25,40
MGLP-R8-E	2,03 - 15,88					20,57	35,69	25,40
MGLP-R12-12	3,05 - 14,22					21,34	41,91	39,24

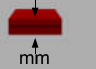



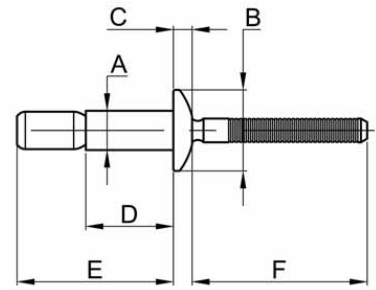
Inox Bombe Kafa - Stainless Steel Dome Head

ÜRÜN NO PART NO	 mm	 [mm]	A	B	C	D	E	F
MGLP-R6-4	1,57 - 6,86	4,85 - 5,11	4,80	9,78	2,16	10,54	17,15	25,40
MGLP-R6-7	5,44 - 11,10					14,53	20,96	25,40
MGLP-R8-6	2,03 - 9,53	6,63 - 6,91	6,40	13,34	2,97	14,22	24,64	25,40
MGLP-R8-10	8,89 - 15,88					20,57	30,99	25,40

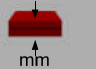



Çelik Havşa Kafa - Steel Countersunk Head

ÜRÜN NO PART NO	 mm	 [mm]	A	B	C	D	E	F
MGL100-R6-6	3,18 - 8,41	4,85 - 5,11	4,78	8,76	1,78	12,34	19,35	25,40
MGL100-R6-9	7,75 - 12,70					16,59	23,60	25,40
MGL100-R8-8	4,06 - 12,07	6,63 - 6,91	6,53	10,29	2,01	16,76	26,90	25,40
MGL100-R8-12	10,54 - 18,42					23,11	33,25	25,40



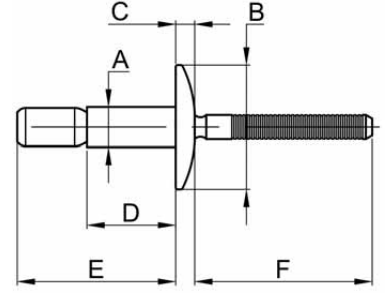
Alüminyum Havşa Kafa - Aluminium Countersunk Head

ÜRÜN NO PART NO	 mm	 [mm]	A	B	C	D	E	F
MGL100-B6-6	3,18 - 8,41	4,85 - 5,11	4,78	8,76	1,78	12,34	19,35	25,40
MGL100-B6-9	7,75 - 12,70					16,59	23,60	25,40
MGL100-B8-8	4,06 - 12,07	6,63 - 6,91	6,53	10,29	2,01	16,76	26,90	25,40
MGL100-B8-12	10,54 - 18,42					23,11	33,25	25,40



Kesme Kopma Değerleri (N)  
Tensile & Shear Values (N)

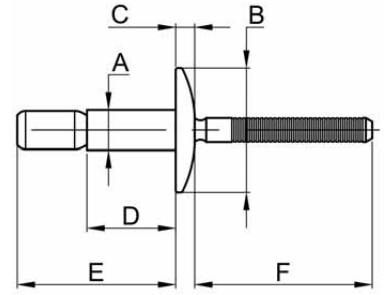
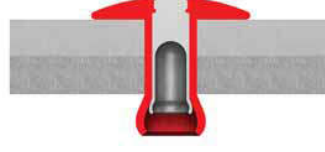
	ÇAP Ø	KESME	KOPMA
Çelik	4,8	5783	667
	6,4	11121	1334
	9,5	26689	2669
Alüminyum	4,8	2669	334
	6,4	5783	445
	9,5	13122	1112
Inox	4,8	5783	445
	6,4	10453	890

# MAGNA-LOK





Çelik Geniş Kafa - Steel Large Head

ÜRÜN NO PART NO	 mm	 [mm]	A	B	C	D	E	F
MGLT-R6-4	1,57 - 6,86	4,85 - 5,11	4,75	12,70	2,16	10,54	17,15	25,40
MGLT-R6-7	5,44 - 11,10					14,53	20,96	25,40
MGLT-R6-E	1,57 - 11,10					14,53	24,13	25,40
MGLT-R8-6	2,03 - 9,53	6,63 - 6,91	6,43	14,94	2,97	14,22	24,64	25,40
MGLT-R8-10	8,89 - 15,88					20,57	30,99	25,40
MGLT-R8-E	2,03 - 15,88					20,57	35,69	25,40



Alüminyum Bombe Kafa - Aluminium Dome Head

ÜRÜN NO PART NO	 mm	 [mm]	A	B	C	D	E	F
MGLT-B6-4	1,57 - 6,86	4,85 - 5,11	4,80	12,70	2,16	10,54	17,15	25,40
MGLT-B6-7	5,44 - 11,10					14,53	20,96	25,40
MGLT-B6-E	1,57 - 11,10					14,53	24,13	25,40
MGLT-B8-6	2,03 - 9,53	6,63 - 6,91	6,40	14,94	2,97	14,22	24,64	25,40
MGLT-B8-10	8,89 - 15,88					20,57	30,99	25,40
MGLT-B8-E	2,03 - 15,88					20,57	35,69	25,40